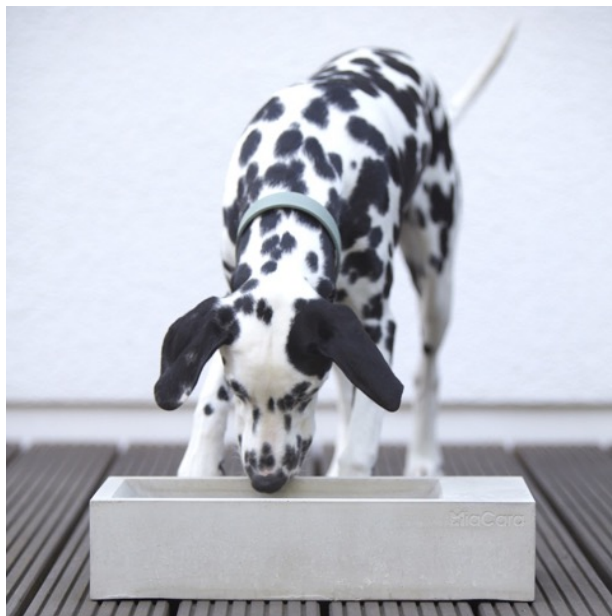


Trogolo
Outdoor water trough



SKU:

C06-002-01, C06-002-02

Description:

Trogolo is a modern interpretation of the classic water trough.

This outdoor model made from natural concrete offers your best friend a perfectly shaped, stable source for drinking and at the same time enriches every garden visually. It allows for easy handling: just let it fill up with rain or refill with watering can.

The asymmetrically tapered inner surfaces allow easy access even for small dogs and make cleaning easy as well. Made of weather-resistant concrete, food safe, with approximately 4 liters capacity and embossed MiaCara-Logo.

Concrete is a natural material: small air pockets in the surface structure, visible material layers and different shades of gray are due to the material and production process and therefore are no deficiency. On the contrary, concrete lovers will appreciate the uniqueness of their individual workpiece.

Concrete develops patina over time, because the use leaves traces. Surfaces can take on stains, edges wear out. For many, that is the special charm of this material. According to the Institute for Environmental Hygiene and Environmental Medicine in Germany, the concrete used to manufacture our water trough meets hygienic requirements for cementitious materials in containers for drinking water and is therefore safely suitable for this purpose.

Sizes, Dimensions & RRP:

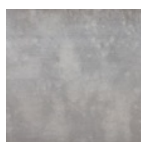
44 x 22 x 10 cm (L x W x H), Weight: approx. 10 kg
approx. 4 liter capacity
RRP: 159,- Euro

Available Colors:

- Grey
- Dark Grey



Grey



Dark Grey

Material:

weatherproof concrete

Material properties:

- waterproof
- weatherproof
- when empty frost resistant

Care Instructions:

Our concrete trough is made from a special type of concrete and specifically designed for outdoor use.

After stripping, each workpiece is sealed and impregnated with a special product (food safe according to LGA). This prevents to a large extent the penetration of water, oil and grease that could cause stains. This way contaminants remain on the surface where they can be easily wiped away. In case of coarse dirt, it is recommended to use a neutral cleaner without the addition of acids (no citrus cleaner).

Please avoid water left standing for too long, because otherwise algae will form. You can easily pour the water by lifting the trough on one side. You can clean and easily refill the trough with a garden hose or a watering can.