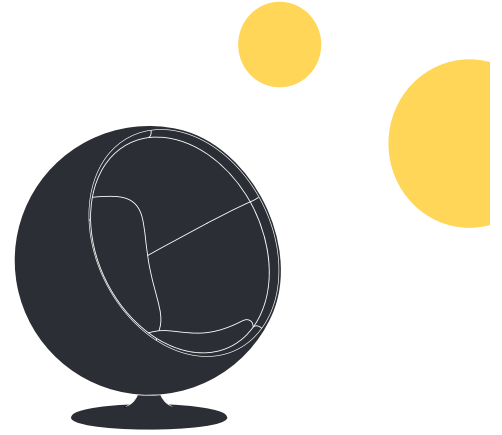


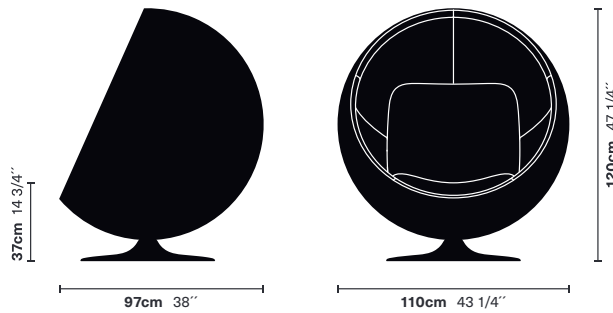
# Ball Chair

Designed by Eero Aarnio 1963

The Ball Chair was designed in the early 1960s, debuting at the Cologne Furniture Fair in 1966. The chair is one of the most famous classics of Finnish design and it was the international breakthrough of Eero Aarnio.



**Dimensions:** 110 cm width x 97 cm depth x 120 cm height



**Weight:** Net weight: 40 kg  
Gross weight: 47 kg

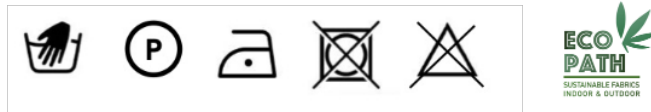
**Materials:** Fibreglass shell, Gelcoat finish  
Colour: White  
(Other shell colours available on request)

**Polyurethane foam cushions**  
FR Foam Crib 5

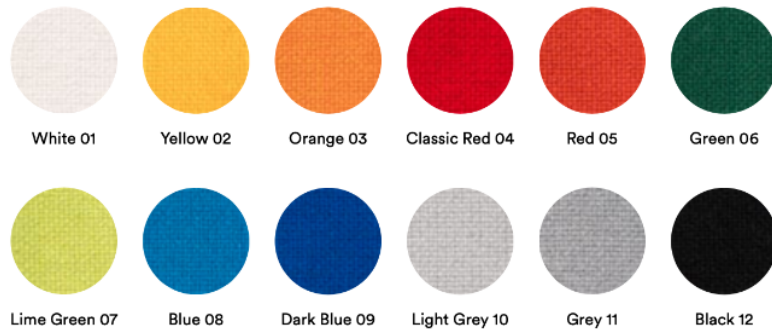


## Upholstery fabric:

Name: EA2021  
Composition: 80% wool, 20% PA  
Weight: 900 g  
Abrasion resistance: > 100.000 Martindale  
Fire resistance: BS 5852-1:1979, EN 1021-1 & 2:2014, TB 117:2013



## Colours:



Other fabric colours available on request.

FEERO  
AARNIO  
ORIGINALS