

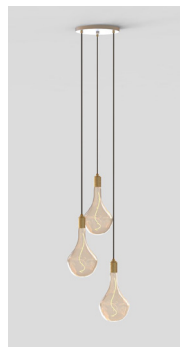
# BRASS TRIPLE PENDANT WITH VORONOI II (UK-EU)

*The Brass Triple Pendant by Tala is a stylish lighting system for a variety of interior settings.*

*Housed in a powder coated steel frame in either white or black finish with three fitted brass grips, three Brass pendants hang at differing lengths for maximum effect. Paired with the sculptural Voronoi II LED bulb.*

## LAMP

**Shape:** Custom  
**Bulb Materials:** Borosilicate Glass and Brass Cap  
**Bulb Finish:** Iron tinted  
**Beam angle:** 360°  
**Base:** E27  
**Working temperature:** -5°C to 40°C  
**Warm up time:** Instant  
**Warranty:** 3 years  
**Input Voltage:** 220-240V  
**Fixture Materials:**  
 Powder Coated Steel, Brass & Glass



White



Black

## DIMENSIONS:

**BULB:**  
 165 x 300 mm (Width x Length)

**FIXTURE:**  
 40 x 65 mm (Width x Length)

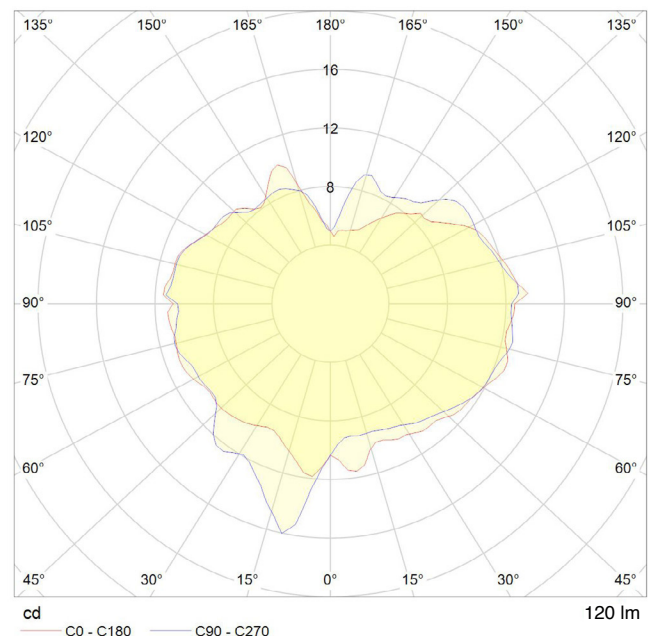
**SMALL CANOPY:**  
 205 x 25 mm (Width x Length)

**CABLE:**  
 4000mm (Length)

## PERFORMANCE (PER BULB)

CRI (colour rendering index)	95
Lamp lumen output	120lm
Flicker	<5%
Lumens per circuit watt (LM/W)	40lm/W
Lifetime (TM-21) (hours)	15,000hrs
Colour Temperature	2200K
Power factor	0.9

## POLAR DIAGRAM



## DIMMING

**Dimmable:** Yes, in-line dimmer included.  
**Dimming type:** Trailing edge

SKU CODES: WHITE (EU): CP-WHT-SET-TRI-BP-02-EU  
 BLACK (EU): CP-BLK-SET-TRI-BP-02-EU

IES/LDT FILE:  
 Available upon request.

EAN CODES: WHITE (EU): 5060400157952  
 BLACK (EU): 5060400157990

