

Collection

Mélange

new

Design by Sybilla



Mélange

Mélange Zoom



300x400



200x300



170x240

Mélange Stripes 1



200x300



170x240



80x240

Mélange Stripes 2



80x240

Mélange Colour 1



200x300



170x240

Mélange Colour 2



140x200

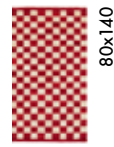
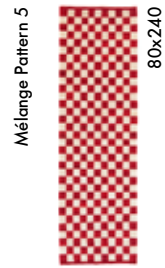
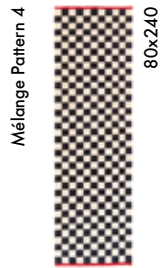
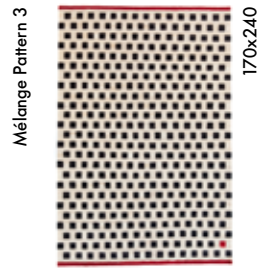
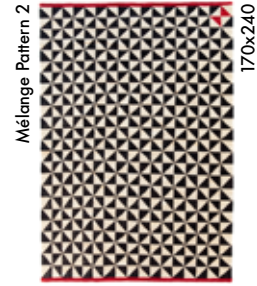
Mélange Colour 3



80x240



Mélange



Mélange





Mélange

Mélange Set suggestions



Mélange

(P) Can be dry-cleaned

Fibre **100% Hand spun Afghan wool** · Technique **Hand woven**
 Type **Kilim** · Density **156.000 knots/m²**
 Total height **4 mm** · Weight **1,40 kg/m²**

Fibra **100% Lana Afgana hilada a mano**
 Técnica **Hand woven** · Tipo **Kilim** · Densidad **156.000 nudos/m²**
 Altura total **4 mm** · Peso **1,40 kg/m²**

Faser **100% Handgesponnen Afghanische wolle** · Technik **Hand woven**
 Ausführung **Kilim** · Dichte **156.000 knots/m²**
 Gesamthöhe **4 mm** · Gewicht **1,40 kg/m²**

Fibre **100% laine Afgane filée à la main** · Technique **Hand woven**
 Type **Kilim** · Densité **156.000 knots/m²**
 Hauteur totale **4 mm** · Poids **1,40 kg/m²**

Fibra **100% Filata a mano lana Afgana** · Tipo di lavorazione **Hand woven**
 Tipo **Kilim** · Densità **156.000 knots/m²**
 Altezza totale **4 mm** · Peso **1,40 kg/m²**



This collection can be made in special measures respecting the original proportions of the standard size. Ask for terms and conditions of delivery.

Esta colección puede hacerse en medidas especiales respetando las proporciones originales del tamaño estándar. Consultar plazo de entrega.

Diese Kollektion kann in Sondermaß hergestellt werden, aber die Proportion des Standardmaßes muss immer respektiert werden. Bitte Lieferzeit erfragen.

Cette collection peut être faite sur-mesure, en respectant les proportions originales de la taille standard. Consultez les délais de livraison.

Questa collezione puo' essere realizzata con misure speciali rispettando le proporzioni delle misure originali. Consultare il termine di consegna.