

Nano chrismy

by Teresa Sapey

Chrismy is the reinvented Christmas tree by Teresa Sapey for Vondom. Is inspired in **natural, organic and elegant shapes** that rise toward its peak in each of its silhouettes to-and-fro movement.

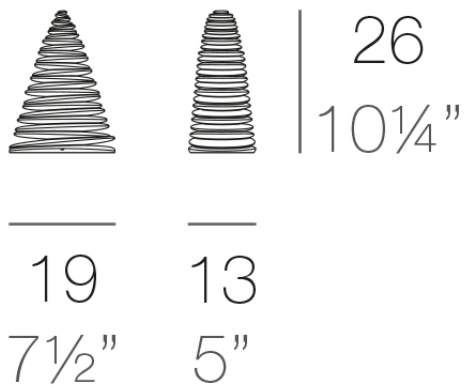


Info

Description

Made of polyethylene resin by rotational moulding. 100% Recyclable. Item suitable for indoor and outdoor use. Available in different finishes.

Weight: 0.37 Kg



CHRISMY Nano Árbol 25cm
CHRISMY Nano Tree 9 3/4"

Finishes

finishes

LACQUERED

Ref. 49069F



crema



modo green



purjai red



orange



notte blue



white



black



bronze



steel



anthracite



champany



red



khaki



taupe



plum



ecru



beige

Lacquered Polyethylene

lighting

WHITE LED

Ref. 49069W

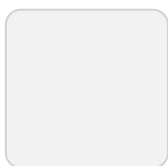


ice

White internally lit unit with LED technology. Available only in matte ice white finish.

RGBW LED BATTERY

Ref. 49069Y



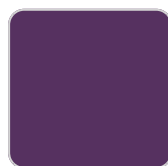
ice



khaki



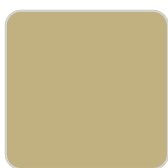
taupe



plum



ecru



beige

Unit with internal lighting with battery-powered RGBW LED technology. Includes charger and remote control for switching colors and charger. Available only in matte ice white finish.

Ambients

